

Prefabricated Compact Lifting Stations for Solid-Laden Wastewater

DOMOBOX BIOBOX DOUBLEBOX Series



The ideal solution when domestic wastewater must be delivered to main sewer lines located at a higher level, or where gravity drainage is impractical.



SPECIFICATIONS

- The pumping station, installed in the basement or buried outdoors, collects domestic effluent (toilet included) without any need for initial treatment.
- BIOBOX consists of a 170-litre polyethylene basin housing a vortex (DLV) or single-channel (DL) sewage pump, a control box and float. It is a complete pumping station equipped with a lowering device.
- DOMOBOX features the same basin as Biobox but is not provided with the lowering device. The DOMO pump (only single-phase version with float) has PVC pipe fittings.

- Where greater capacity is required use DOUBLEBOX, a prefabricated lifting station which has twice the capacity of Biobox (400 litres) and is designed to house two pumps. The operating principle is the same but it produces higher heads.
- The system consists of:
 - 170-litre (400 for Doublebox) polyethylene basin with screw-down lid.
 - Cable glands for power supply cables (and floats).
 - 2" delivery pipe.
 - Three inlets for discharge or ventilation.
 - DOMO or DL submersible pump, vortex or channel type.
 - Lowering device (except on Domobox).
 - Vent or emergency drain plug.
 - Control box (for Biobox and Doublebox).
- Accessories available on request:
 - 300 mm base (up to 3 bases can be installed).
 - Ball valve.
 - Alarm float.
 - For the operating characteristics (capacity – head) see DOMO and DL pump section in this catalogue.

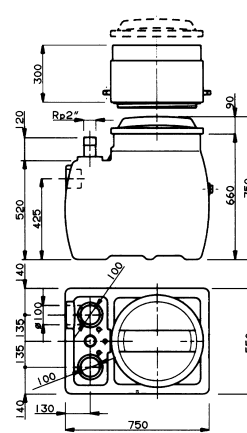
SPECIFICATIONS

DOMOBOX, BIOBOX, DOUBLEBOX

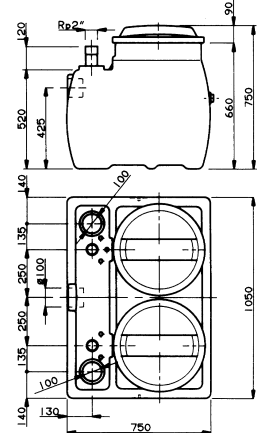
PUMP TYPE		CAPACITY		KW	HP	IMPELLER TYPE	LOWERING DEVICE
SINGLE-PHASE 220-230 V 50 Hz	THREE-PHASE 380-415 V 50 Hz	BIOBOX lt	DOUBLE-BOX lt				
DOMO 7	-	170	-	0,55	0,75	CHANNEL	NO
DOMO 7VX	-	170	-	0,55	0,75	VORTEX	NO
DOMO 10	-	170	-	0,75	1	CHANNEL	NO
DOMO 10VX	-	170	-	0,75	1	VORTEX	NO
DLM 90	DL 90	170	400	0,6	0,8	CHANNEL	YES
MINI VX M	MINI VX	170	400	0,6	0,8	VORTEX	YES
DLM 109	DL 109	170	400	1,1	1,5	CHANNEL	YES
DLVM 100	DLV 100	170	400	1,1	1,5	VORTEX	YES

For hydraulic performances, refer to the corresponding electric pump curves.

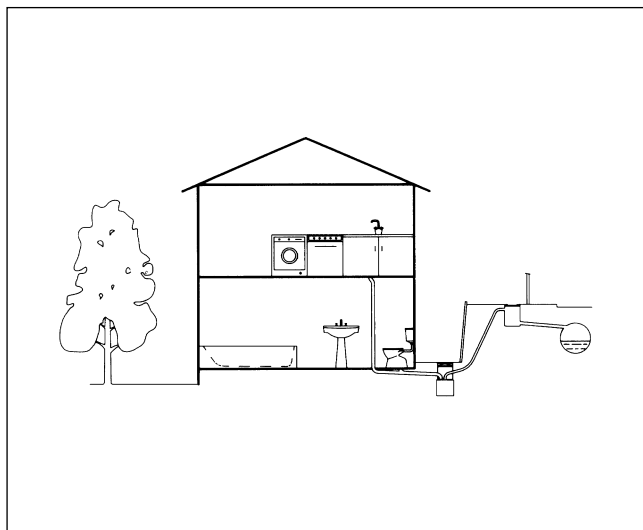
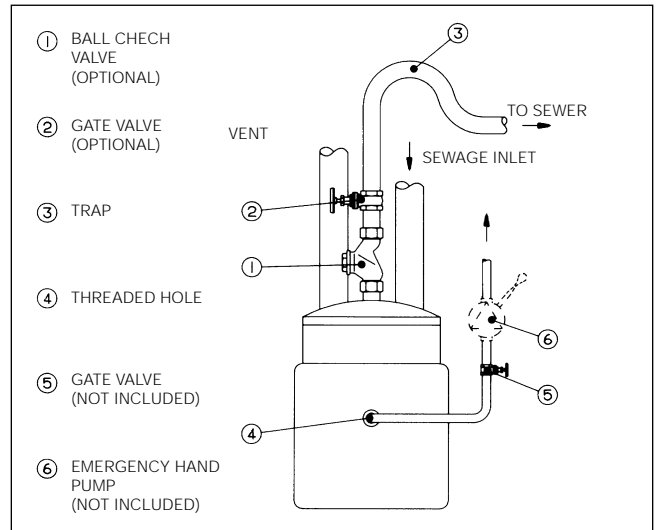
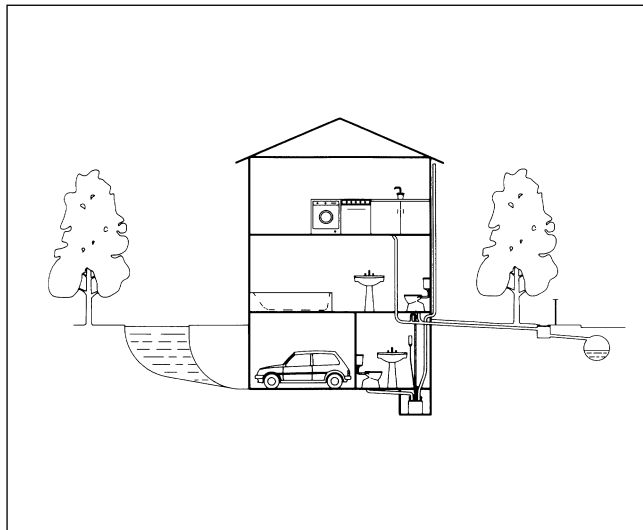
DOMOBOX and BIOBOX BASIN



DOUBLEBOX BASIN



APPLICATION ILLUSTRATIONS



ACCESSORIES AVAILABLE REQUEST

- FOR
 - DOMOBOX
 - BIOBOX
 - DOUBLEBOX:
- 300 mm base (up to 3 bases may be installed)
 - Ball valve
- For DOUBLEBOX:
 - Alarm float.